

ALAMO
ORTHODONTICS

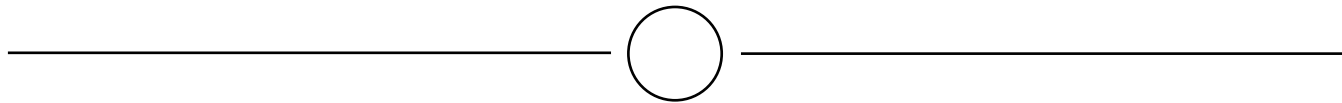


Dedication to:
The amazing patients that make this all
possible!

Table of Contents

A Welcome Message	Pg 4
What Patients are saying about us	Pg 5
Doctor Biography	Pg 6-7
Big 'Al the Alamosaurus	Pg 8-9
When Should I see an Orthodontist	Pg 10-11
Before and After Photos	Pg 12-23
Frequently Asked Questions	Pg 24-25
Contact Information	Pg 26

Our Mission



To elevate the human experience by
crafting life changing smiles with
AMAZING customer service.



Dr. Reece here! Let me be the first to welcome you to Alamo Orthodontics! We love what we do! At our practice we take pride in providing a fun and inviting atmosphere for all ages. We work hard to give people a better life through a healthier and happier smile! We tackle the most crowded and crooked teeth from ages 7 to 77. In the following pages, you will find before and after photos of real Alamo Orthodontic patients.

Enjoy and we look forward to meeting you in our clinic!



"Throughout my son's treatment from Phase 1 to Phase 2, the level of care and attention to his every need has been extraordinary. Dr. Reece and his team are exceptionally skilled and genuinely dedicated to the well-being and satisfaction of their patients. The office frequently holds gift-giving raffles, adding a fun element for the kids. When you visit this office, you can expect a clean, well-organized, and welcoming environment."

-Jasabel Medina

-Andrea Beltran "Well today was my last visit after wearing braces for awhile but I want to say I'm going to miss everyone there. My experience there was really awesome with the staff that is so caring and always had smiles on their faces. Every visit was a great experience. I highly recommend them to anyone who wants to get braces. Tell them Andrea Beltran sent you."

"My family and I really love Dr. Reece and his whole staff, they're all amazing. He's really great with how he treat all his patients, the atmosphere is great and we feel welcomed every time we go for our appointments and most of all affordable."

-Genell Williams

-Jessica Sandoval "Such an AMAZING place!! Dr. Reece is so amazing! Kind, efficient, patient, very informative! All the staff so friendly! LOVE this place! Would recommend to anyone!! Positivity spreads like wild flower!! In the world we live in today, so refreshing to still have places we can go and enjoy this type of treatment!!"

Dr. Caleb Reece DMD, MSD

Hi, I'm Dr. Reece. I grew up in Southern Utah. After more than a decade of adventuring, going to school and living out of state, my beautiful wife Michon and I decided to plant our roots in El Paso with our four awesome kids. We have two daughters and two sons. You can catch us runnings kids around to activities, playing Pickleball, riding bikes, baking a treat or two, or eating our way through Disneyland. I also love to fish, One-wheel, exercise, travel, and spend time with my friends and family.

Alamo Orthodontics is important to me. I have spent over ten years in school, dreaming about the day I would become an Orthodontist and start my dream practice. My wife Michon and I strive to build a legacy of hard work for our family and showing kindness to everyone we meet. We value God, family, our Country, and being examples of honesty, integrity, and a positive attitude.

Within the walls of Alamo Orthodontics, and in my clinical chair, it is my sincere hope that our patients feel valued and experience genuine kindness, elite clinical results, and finish treatment with us feeling like their lives have been elevated. My family and I are grateful for your business. Thank you for choosing Alamo Orthodontics!

My Family



*Who is **Big 'Al** the Alamosaurus*

The Prehistoric Mascot Bringing Smiles to Alamo Orthodontics

One day, Dr. Reece was reading a children's dinosaur book to his four young kiddos. While learning about the different types of dinosaurs, Dr. Reece came across the Alamosaurus, a remarkable long-neck dinosaur known as the largest species of its kind in North America, reaching lengths of up to 95 feet. These herbivorous giants roamed the Earth during the Late Cretaceous period, and their massive size and gentle nature captivated Dr. Reece and his family. Inspired by the Alamosaurus, Dr. Reece thought it would be a perfect mascot to represent the Alamo Orthodontics family. Shortly after, **Big 'Al** the Alamosaurus was born and became a key part of our brand.

In designing Big 'Al, we wanted to create a mascot that reflected not only the grandeur of the Alamosaurus but also the fun, sleek, and inviting atmosphere we strive to provide for patients of all ages. The vibrant and approachable design of Big 'Al reinforces our commitment to ensuring that every smile journey is filled with warmth, positivity, and a touch of prehistoric charm. We hope you enjoy your smile journey with us and **Big 'Al**!



Big 'AI est. 2024

When should I see the orthodontist?

The American Association of Orthodontists (AAO) recommends that children at the 7 years old be seen by an orthodontic specialist.

At this age the problems with skeletal jaw growth or dental eruption can be corrected as the child is still growing. A few key things are checked in this initial visit. Orthodontists check your 7 year old child for the following:

Proper upper and lower jaw growth

- If the lower jaw is outgrowing the upper jaw, this can be corrected from ages 7 to age 9. This time-frame is crucial because beyond age 9 jaw correction is no longer possible with just appliances after age 9, surgery or tooth extractions become your options.

Proper tooth eruptions

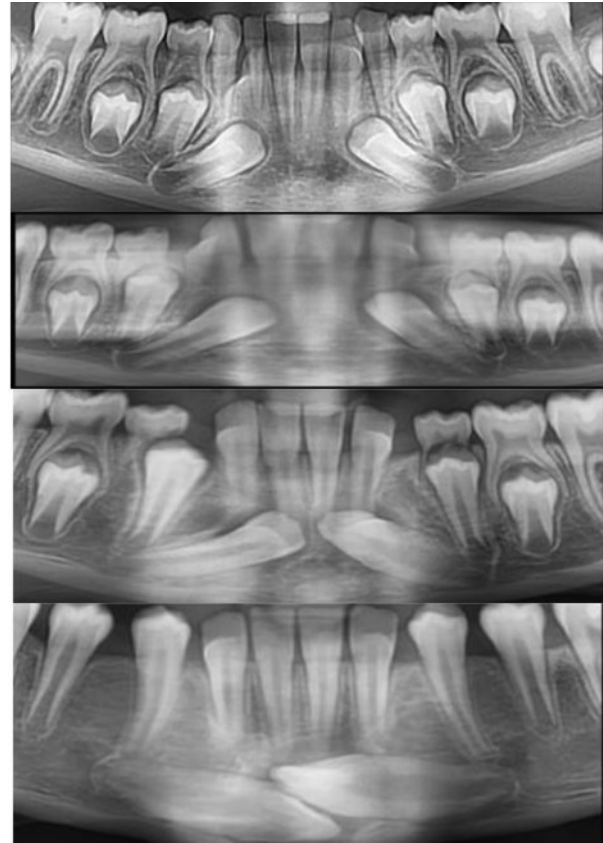
- We check and make sure the teeth are erupting the way they should. If the adult teeth veer off in the wrong direction before too long they will get stuck in the jaw bones. To avoid this we can do an early treatment at age 7-8 which prevents the patient having to go through surgery to get that tooth into the arch.

- We also check the way the teeth connect or bite onto another tooth. If it is causing damage to adjacent teeth, then early treatment is also recommended.

Here is an example of improper dental eruption that can be prevented if treatment by an orthodontist is completed around ages 7-8 years old.



For more information on what is recommended by the American Association of Orthodontists (AAO) please scan the QR code above.



Here we have over the course of a couple of years the adult lower canines were neglected... and as you can see, they are now all but impossible to save.

At this point, extracting the canines is the more plausible solution. However, if this were treated at an early age, these teeth could have been saved.

Before



Here we have our patient that presents with a cross-bite where the lower teeth are in front of the upper teeth. The upper teeth are crowded and gum recession is developing in the lower incisor region.

Our treatment included a full set of braces on the upper and lower teeth. In addition to braces we needed to remove four premolars - two on top with two on bottom. This gave us the space needed to fix the cross-bite and straighten the teeth.

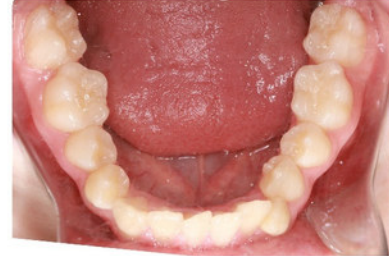
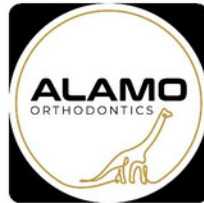
After



Here you can see the final result. All the teeth are aligned and spaces all closed. We corrected the cross-bite and lower incisors are tucked back into the bone to help with the gum recession

The final result is a healthy and beautiful smile. All the teeth line up properly in the back with the dental midlines aligned. The patient is extremely happy and we are proud of these results :)

Before



This patient came to us with a combined dental and jaw misalignment. Also there is some dental crowding along with a cross-bite that spans from the back of the mouth to the front. Smile aesthetics and oral health are in jeopardy.

Our treatment was a team approach with her general dentist and oral surgeon. We required the lower first premolars to be removed to alleviate crowding. We aligned the teeth and made necessary adjustments in preparation for jaw surgery.

After

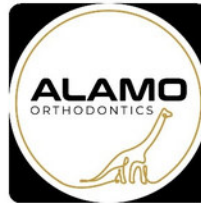


The final results are exciting! The patient now has a beautiful, functional and healthy smile. The face is also well balanced with the lower jaw aligned with the rest of the face.

The teeth connect correctly allowing proper over-jet and overbite. Looking at the before and after smiles, the patient is definitely happy with the results!

****Patient requested to remain anonymous****

Before



Here we have a case with severe over-jet and severe crowding. The over-jet is such that it traps the lower lip causing it to evert. The lower crowding is causing gingival and bone loss.

The patient and her parents are wanting to correct their daughter's smile. We recommended braces treatment for a period of 24 months in addition to extracting four premolars.

****Patient requested to remain anonymous****

After



Here the final result is a beautiful smile with a healthy occlusion/bite. The way the front teeth are now vertically positioned protects the gum tissue and prevents bone loss. The back teeth all connect with peaks and valleys in the correct locations.

You can tell the patient is very happy with her smile. The teeth now fit inside the bony housing of the jaws. This leads to long-term oral health. This makes it easier to clean and prevent cavities. We love this result!!

Before



Here we have a patient that was ready for her phase II treatment. Her phase I included sequential extractions to allow for a smoother tooth eruption. This is done to prevent impactions of permanent teeth or teeth getting stuck in the jaw bones.

The phase II treatment was recommended because of the excess overbite and over-jet. These are a symptom of the underdeveloped lower jaw. If you look at the side views of the dentition, they don't line up with peaks and valleys.

After



A full set of ceramic braces were placed to allow us to fix the excess overbite and overjet that are a result of the lower jaw not growing forward enough. We lined the teeth up and then used elastics to bring the lower jaw forward.

As you can now see, the excess over-jet and overbite have been corrected as a result of moving the lower jaw forward. The patient is very happy with the result and so are we!!!!

****Patient requested to remain anonymous****

Before



This patient transferred to our care from an out of town office. The original treatment plan was to try and fit every tooth into the arch. However, this protruded the lower lip and the teeth were not biting together properly.

With the approach of fitting every tooth into the mouth, the front teeth have a final position that is leaning out or the "flared" look. A much more flattering appearance of the teeth is when they are straight up and down in a vertical position.

****Patient requested to remain anonymous****

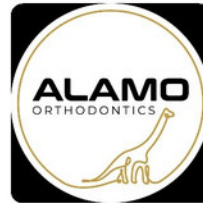
After



We decided to solve all of these issues with extracting four premolars - two on top and two on the bottom. We swapped out the braces to our preferred style... and closed all the spaces.

The final result is a much better occlusion where the peaks and valleys all connect and the incisors are vertically positioned. This gives the smile the prettiest look and the teeth don't protrude forward. The patient was very happy with the results and so are we!!!

Before



This young man had severe dental crowding to the point that his adult maxillary canines were erupting on top of his maxillary permanent lateral incisors. This happens usually when there is early loss of the maxillary baby canines.

At this point we now need to select which tooth we want to keep. Since the maxillary first premolars and the maxillary canines are trying to both occupy the same spot, we need to choose between the two teeth. We like canines over premolars because they are longer and stronger teeth.

After



We placed brackets on our young friend and had his dentist remove the maxillary first premolars. Through a little expansion we were able to resolve the lower arch crowding.

The final result is stunning. The front teeth are all in a vertical final position. The back teeth connect as they should - in a peaks and valley formation. The teeth and bite are where we like them! The patient is very happy with the result and so are we!!

Frequently Asked Questions

When is the best time to see an orthodontist?

At age 7 we are able to diagnose for proper jaw and tooth growth. At this age we can do preventative orthodontics. This can bypass surgical procedures that would be needed had we waited past the age of 7.

What is the difference between aligners and braces?

Aligners can be a great choice for smiles that need minor to moderate corrections. Aligners can be removed by the patient allowing for more freedom to eat any types of foods. Aligners are also clear, allowing for a more aesthetic process of orthodontic treatment.

Braces are the most powerful instrument an orthodontist can use. With braces, the orthodontist can correct any orthodontic issue. Sometimes these are also used in conjunction with oral surgery to correct for misaligned jaws. An A+ result can be more predictable with braces.

How much does orthodontic care cost?

Orthodontic care is unique to every patient and an investment in their overall wellbeing. Because of this the cost varies. To understand this, it is best to have a free consult where we can discuss this in combination with any dental insurance benefit you might have.

Frequently Asked Questions

How long does it take to get my braces on and off?

The process of getting started in treatment begins with some pictures of your teeth and smile. After that we have you sit in our treatment chair and place the braces onto your teeth. This process involves cleaning and placing a bonding agent on the teeth and then final positioning of the brackets. This process takes about an hour and then you're done.

To get the braces off, it also takes about an hour. We clip the brackets off the teeth, polish all the glue off and adjust the sharp corners of the teeth. After this is all done, we show you the final result. We go over how to wear retainers and take a picture to celebrate your happy day!

How long will I have braces or aligners?

The length of treatment depends on what we are trying to achieve. Time-frames for a typical Phase I treatment are 12-15 months. For a Phase II case we are usually looking at 24-30 months. These times are a best guesstimate because the treatment time can be affected by how well the patient takes care of their braces and wears their oral elastics.

Also, teeth only move so fast. It doesn't really matter if you are moving them with braces or plastic aligners. As long as the correct amount of force is being applied in the proper direction, the tooth will move. The great thing about aligners is the clear aspect of them. They are less noticeable when smiling.

Contact Information

Silver City Location:

1608 N. Bennett Street
Silver City NM 88061

Phone: 575-534-3699

Alamogordo Location:

516 East 1st Street Unit K
Alamogordo NM 88310

Phone: 575-434-1275

El Paso Location:

14021 Pebble Hills Blvd Suite 206-07
El Paso TX 79938

Phone: 915-85-SMILE
915-857-6453

